

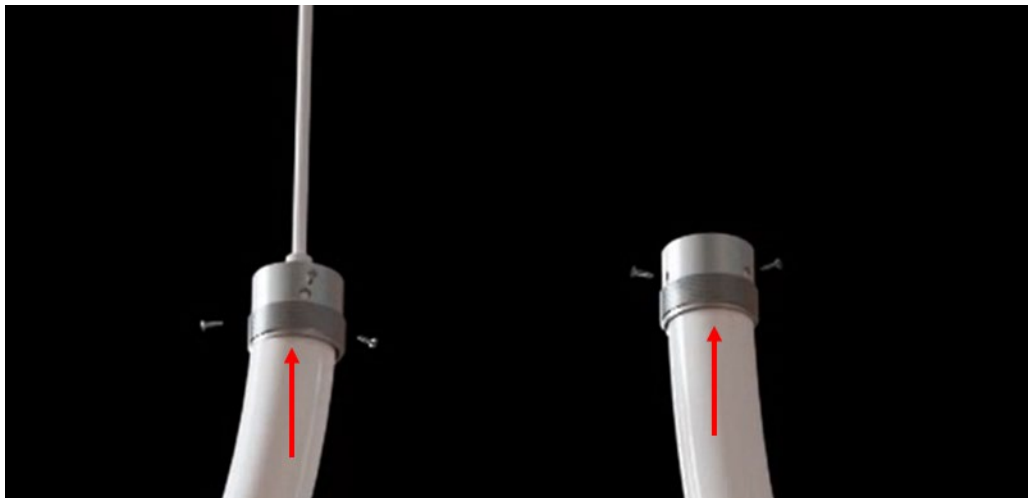
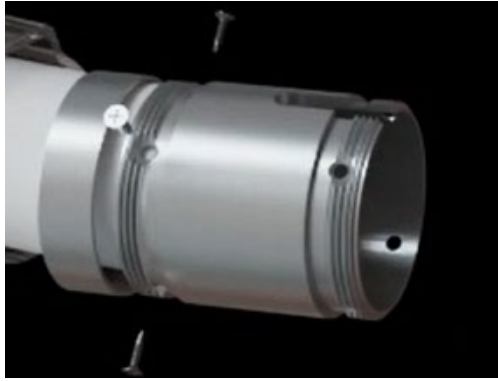
## 360 Neon Installation Manual - Mounting

LN360-PDTMT, LN360-SM-2, LN360-SM-CAP, LN360-STEM, LN360-COUPLER, LN360-CTBS-1m, LN360-CTB-2m, LN360-CTBS-38mm, LN360-PDT-CBL

### Metal Caps: LN360-PDTMT, LN360-SM, LN360-COUPLER

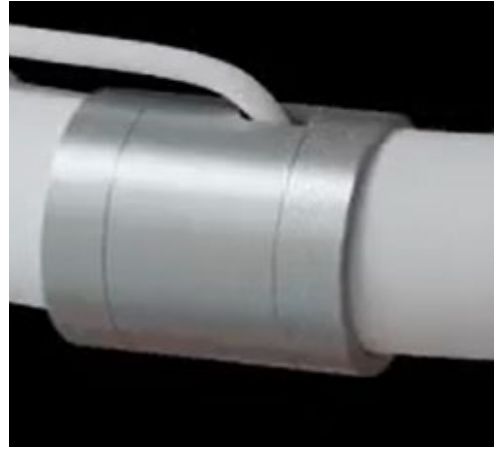
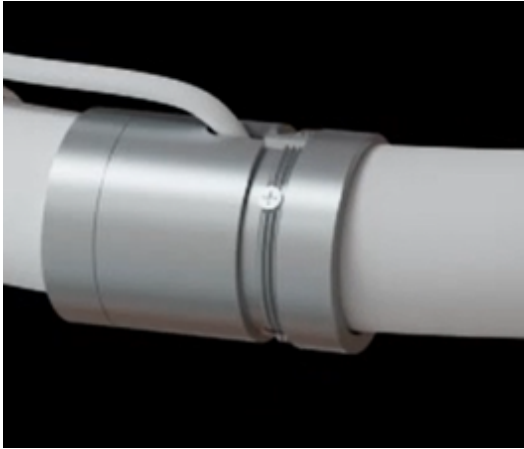
#### Attaching neon to mounting accessories:

1. Twist the inner cap to unscrew from the outer cover. Insert 360 neon into the inner cap and pull the lead through the end cap hole when applicable.
2. Screw the 4 small screws (included) into the neon through the small holes, securing the neon in the cap.



Eluxtra™ products are exclusively available for purchase through Environmental Lights and City Theatrical.

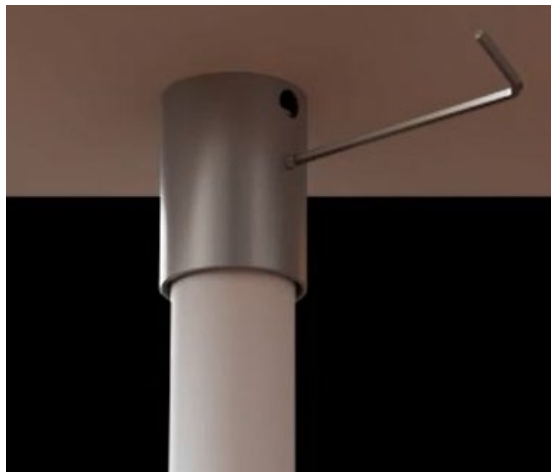
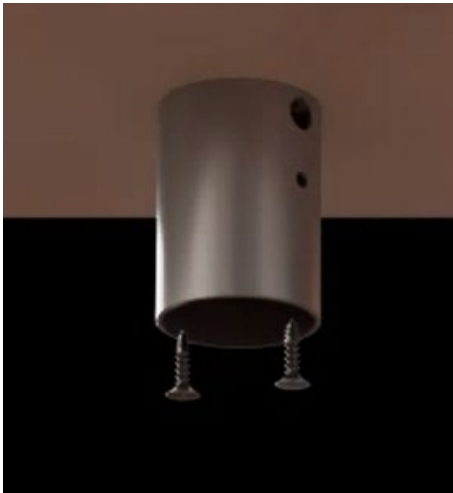
3. (Coupler) Screw outer covers over inner cap and screw holes.



## Ceiling Mounts: LN360-PDTMT, LN360-SM, LN360-STEM, LN360-PDT-CBL

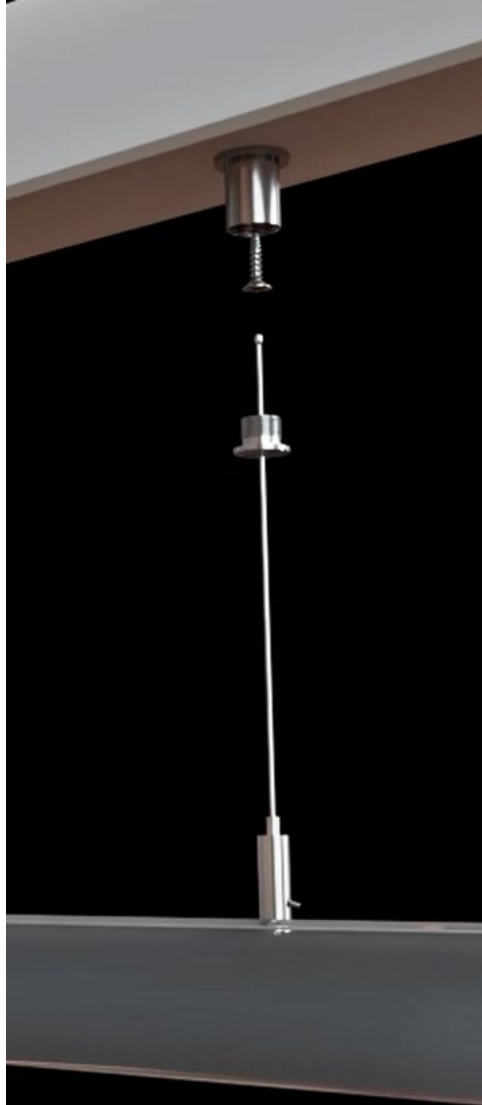
### Attaching mounting accessories to mounting surface:

1. Screw mounting cap into ceiling. Use anchors if necessary.
2. (Surface and Stem Mounts) Insert the section gripping the neon into the ceiling-mounted piece and rotate to lock the two sections together.
3. (Stem Mounts) Use hex key to tighten set screw on Surface Mount caps.



Eluxtra™ products are exclusively available for purchase through Environmental Lights and City Theatrical.

4. (Pendant Style) Adjust the cable to the desired length by pulling it through the cable gripper. Once installed, the weight of the fixture will retain the cable length.
5. (Pendant Style) Thread the cable-capture fitting into the ceiling mount.



Eluxtra™ products are exclusively available for purchase through Environmental Lights and City Theatrical.

Environmental  
Lights™

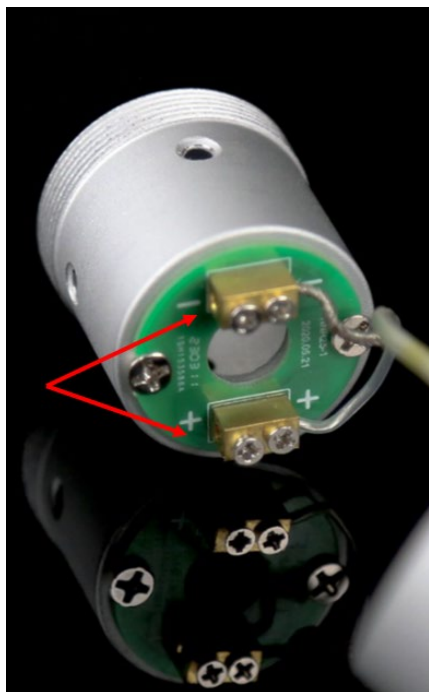
**Environmental Lights**  
888-880-1880  
[contactus@environmentallights.com](mailto:contactus@environmentallights.com)

**CITY  
THEATRICAL**  
NEW YORK • LONDON  
An Environmental Lights Company

**City Theatrical**  
US: 800-230-9497 / [sales@citytheatrical.com](mailto:sales@citytheatrical.com)  
UK: +44 (0)20 8949 5051 / [salesuk@citytheatrical.com](mailto:salesuk@citytheatrical.com)

## LN360-PDTMT

Pendant Mount requires wires to be connected to power and ground terminals inside the cap.



## LN360-CTB-2m

Pendant Mount and Surface Mount to Hanging Cap can be used with Clear Tube by sliding the clear tube over the neon before installing the hanging end cap.



Eluxtra™ products are exclusively available for purchase through Environmental Lights and City Theatrical.

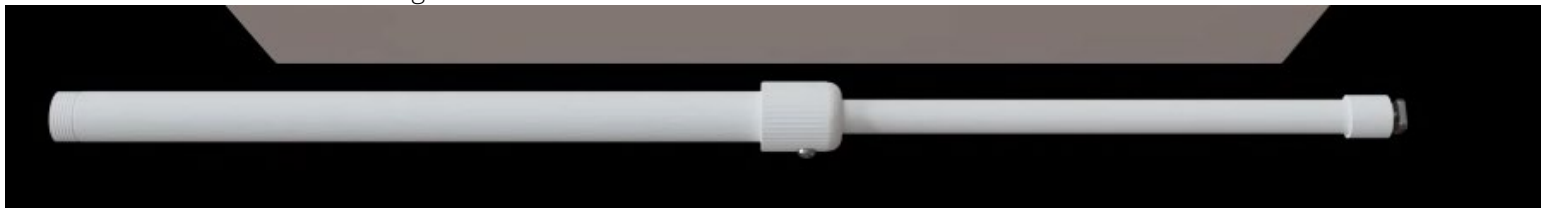
## LN360-STEM



1. Unscrew set screw and twist stem to expand.



2. Twist the stem back and tighten set screw to secure.

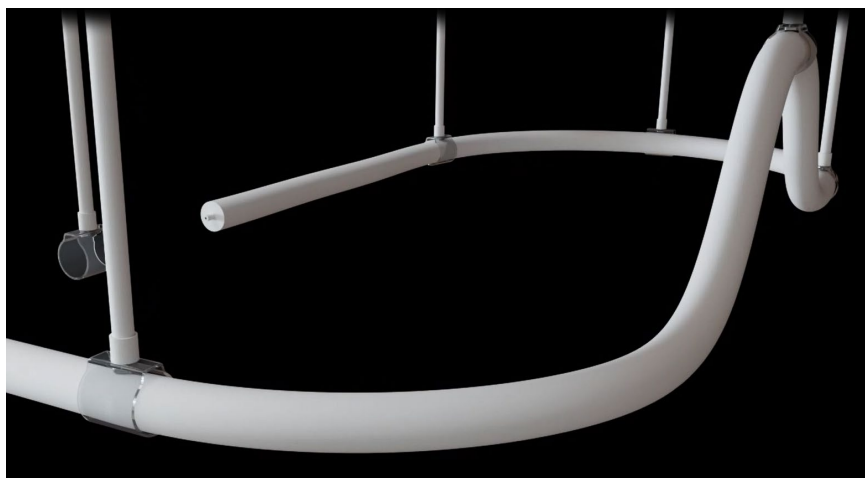


Eluxtra™ products are exclusively available for purchase through Environmental Lights and City Theatrical.

3. Twist onto 38mm or 1m tube with M5 thread.



4. Pull neon through multiple stems to achieve desired design.



Eluxtra™ products are exclusively available for purchase through Environmental Lights and City Theatrical.